

Hanscomb

Escalation First Quarter 2014

The mid-February 2014 Non-residential Construction Price Indices were released by Statistics Canada on May 13th. The second quarter indices for 2014 will be available mid-August 2014.

Nationally, the results for this quarter show significant improvement over the past two survey periods. The national composite index moved up more decisively this quarter from 152.5 to 153.3 or 0.5%. Expressed year over year, the national composite is up by 1.3%. Statistics Canada is reporting that this quarterly increase is attributable mainly to increases in material prices.

Across the country, all cities tracked by Statistics Canada showed improved growth results similar to the national composite. Perhaps most significantly, Ottawa reversed a year over year loss of -0.5% last quarter with a reported year over year increase of 0.2%, improving modestly from a 2013 fourth quarter result of 155.5 to the current 155.8. In Toronto, the largest construction market in the country the quarterly increase of 0.5% translated into a year over year growth rate of 0.7%. The western cities of Calgary, Edmonton and Vancouver all continue to report year over year increases above the national composite rate of 1.6%, 2.1% and 3.0% respectively.

It bears remembering that the indices prepared for Statistics Canada are intended only to track cost changes in a given city. The index cannot be used to compare costs between cities.

The source data used to prepare the charts in this newsletter is drawn from Statistics Canada's Capital Expenditures Price Statistics publication – catalogue 62-007-XWE. Specifically, we used the Non-residential Building Construction Price Indexes for the national composite and each surveyed city indicated on tables 7.2 through 7.9. Readers are cautioned that Statistics Canada does, on occasion, restate indices from previous quarters. Individual city and national composite indices reported in this newsletter reflect these changes. Indices restated from the previous report are highlighted for ease of reference where appropriate.

More information about this and other construction related indices published by Statistics Canada are available on line at www.statcan.gc.ca.

- Paul Westbrook

Page 1:
Escalation Watch

Page 2:
Statistics Canada
Non-Residential
Construction Cost
Indices for 7 Cities
First Quarter 2014

Services

Cost Planning & Control
Value Management

Litigation Support
Construction Monitoring

Feasibility Studies
Time Management

Loan Monitoring
Applied Research

Canadian Offices and Service Contacts

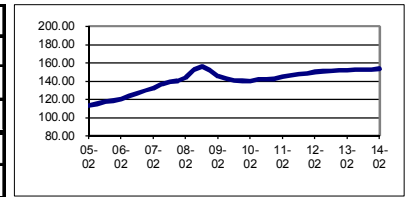
Vancouver	Thilak Bandara Ken King	604 - 685 - 1241	Applied Research	Art Maw	613 - 234 - 8089
Edmonton	Mike Swick	780 - 426 - 7980	Loan Monitoring	Raymond Murray	902 - 422 - 3620
Calgary	Paul Weatherby	403 - 234 - 9490		Grant Mercer	613 - 234 - 8089
Winnipeg	Isaac Gwendo	204 - 775 - 3389		Dale Panday	416 - 487 - 3811
Hamilton	Craig Bye	905 - 525 - 5777			
Ottawa	Art Maw Grant Mercer	613 - 234 - 8089			
Toronto	Susan Neil Dale Panday	416 - 487 - 3811			
Halifax	Raymond Murray	902 - 422 - 3620			

Prefer to have your copy in PDF?
Hanscomb's Escalation Watch
can be downloaded at hanscomb.com

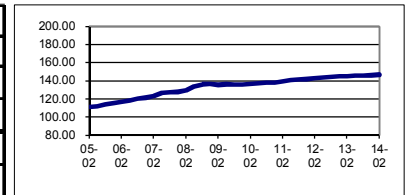


STATISTICS CANADA NON-RESIDENTIAL CONSTRUCTION COST INDICES, IN EACH CITY 2002 = 100 (Cat. No. 62-007-XWE)

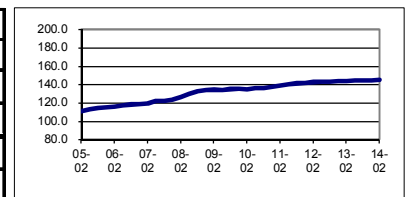
COMPOSITE 7 CITY	2011		2012				2013				2014
	Mid-Aug	Mid-Nov	Mid-Feb	Mid-May	Mid-Aug	Mid-Nov	Mid-Feb	Mid-May	Mid-Aug	Mid-Nov	Mid-Feb
Index	147.4	148.3	149.8	150.7	151.0	151.4	151.4	152.1	152.3	152.5	153.3
Year / Year					2.4%	2.1%	1.1%	0.9%	0.9%	0.7%	1.3%
Quarterly		0.6%	1.0%	0.6%	0.2%	0.3%	0.0%	0.5%	0.1%	0.1%	0.5%
Q. Cumulative	0.0%	0.6%	1.6%	2.2%	2.4%	2.7%	2.7%	3.2%	3.3%	3.5%	4.0%



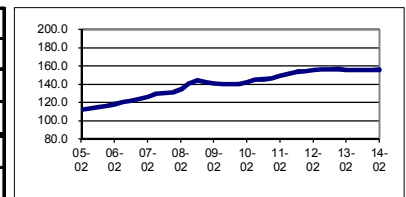
HALIFAX	2011		2012				2013				2014
	Mid-Aug	Mid-Nov	Mid-Feb	Mid-May	Mid-Aug	Mid-Nov	Mid-Feb	Mid-May	Mid-Aug	Mid-Nov	Mid-Feb
Index	141.1	141.7	142.6	143.4	144.4	144.6	144.8	145.6	145.7	145.8	146.6
Year / Year					2.3%	2.0%	1.5%	1.5%	0.9%	0.8%	1.2%
Quarterly		0.4%	0.6%	0.6%	0.7%	0.1%	0.1%	0.6%	0.1%	0.1%	0.5%
Q. Cumulative	0.0%	0.4%	1.1%	1.6%	2.3%	2.5%	2.6%	3.2%	3.3%	3.3%	3.9%



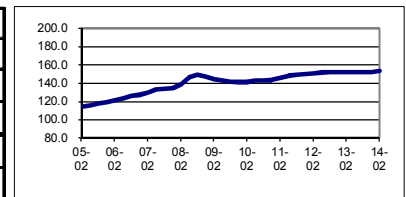
MONTREAL	2011		2012				2013				2014
	Mid-Aug	Mid-Nov	Mid-Feb	Mid-May	Mid-Aug	Mid-Nov	Mid-Feb	Mid-May	Mid-Aug	Mid-Nov	Mid-Feb
Index	141.2	141.6	142.5	142.9	143.0	143.8	143.8	144.2	144.0	144.1	145.0
Year / Year					1.3%	1.6%	0.9%	0.9%	0.7%	0.2%	0.8%
Quarterly		0.3%	0.6%	0.3%	0.1%	0.6%	0.0%	0.3%	(0.1%)	0.1%	0.6%
Q. Cumulative	0.0%	0.3%	0.9%	1.2%	1.3%	1.8%	1.8%	2.1%	2.0%	2.1%	2.7%



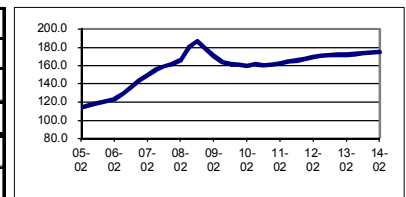
OTTAWA	2011		2012				2013				2014
	Mid-Aug	Mid-Nov	Mid-Feb	Mid-May	Mid-Aug	Mid-Nov	Mid-Feb	Mid-May	Mid-Aug	Mid-Nov	Mid-Feb
Index	153.4	154.1	154.9	155.9	156.0	156.3	155.5	155.4	155.5	155.5	155.8
Year / Year					1.7%	1.4%	0.4%	(0.3%)	(0.3%)	(0.5%)	0.2%
Quarterly		0.5%	0.5%	0.6%	0.1%	0.2%	(0.5%)	(0.1%)	0.1%	0.0%	0.2%
Q. Cumulative	0.0%	0.5%	1.0%	1.6%	1.7%	1.9%	1.4%	1.3%	1.4%	1.4%	1.6%



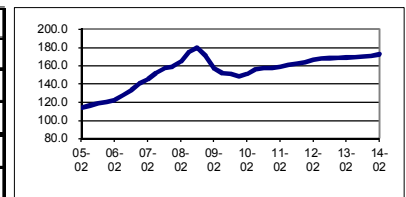
TORONTO	2011		2012				2013				2014
	Mid-Aug	Mid-Nov	Mid-Feb	Mid-May	Mid-Aug	Mid-Nov	Mid-Feb	Mid-May	Mid-Aug	Mid-Nov	Mid-Feb
Index	149.0	150.0	150.7	151.5	151.7	152.0	151.9	152.1	152.1	152.2	153.0
Year / Year					1.8%	1.3%	0.8%	0.4%	0.3%	0.1%	0.7%
Quarterly		0.7%	0.5%	0.5%	0.1%	0.2%	(0.1%)	0.1%	0.0%	0.1%	0.5%
Q. Cumulative	0.0%	0.7%	1.1%	1.7%	1.8%	2.0%	1.9%	2.1%	2.1%	2.1%	2.7%



CALGARY	2011		2012				2013				2014
	Mid-Aug	Mid-Nov	Mid-Feb	Mid-May	Mid-Aug	Mid-Nov	Mid-Feb	Mid-May	Mid-Aug	Mid-Nov	Mid-Feb
Index	165.3	166.7	169.4	170.8	171.1	171.6	171.7	172.2	173.4	174.0	174.5
Year / Year					3.5%	2.9%	1.4%	0.8%	1.3%	1.4%	1.6%
Quarterly		0.8%	1.6%	0.8%	0.2%	0.3%	0.1%	0.3%	0.7%	0.3%	0.3%
Q. Cumulative	0.0%	0.8%	2.5%	3.3%	3.5%	3.8%	3.9%	4.2%	4.9%	5.3%	5.6%



EDMONTON	2011		2012				2013				2014
	Mid-Aug	Mid-Nov	Mid-Feb	Mid-May	Mid-Aug	Mid-Nov	Mid-Feb	Mid-May	Mid-Aug	Mid-Nov	Mid-Feb
Index	162.2	163.5	166.2	167.5	168.0	168.4	168.6	169.1	169.9	170.3	172.1
Year / Year					3.6%	3.0%	1.4%	1.0%	1.1%	1.1%	2.1%
Quarterly		0.8%	1.7%	0.8%	0.3%	0.2%	0.1%	0.3%	0.5%	0.2%	1.1%
Q. Cumulative	0.0%	0.8%	2.5%	3.3%	3.6%	3.8%	3.9%	4.3%	4.7%	5.0%	6.1%



VANCOUVER	2011		2012				2013				2014
	Mid-Aug	Mid-Nov	Mid-Feb	Mid-May	Mid-Aug	Mid-Nov	Mid-Feb	Mid-May	Mid-Aug	Mid-Nov	Mid-Feb
Index	138.6	139.5	141.7	142.7	142.9	143.3	143.5	146.9	147.3	147.4	147.8
Year / Year					3.1%	2.7%	1.3%	2.9%	3.1%	2.9%	3.0%
Quarterly		0.6%	1.6%	0.7%	0.1%	0.3%	0.1%	2.4%	0.3%	0.1%	0.3%
Q. Cumulative	0.0%	0.6%	2.2%	3.0%	3.1%	3.4%	3.5%	6.0%	6.3%	6.3%	6.6%

